

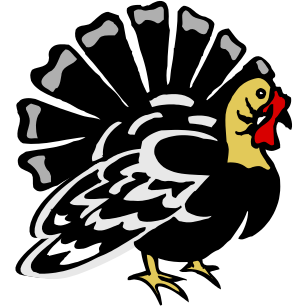


Takoma Park Child Development Center Monthly Newsletter

November 2011

Director's Report

Takoma Park Child Development Center
310 Tulip Avenue
Takoma Park, MD 20912
301-270-6824
tpcdc1111@yahoo.com



Dear TPCDC parents,

We started the new academic year well and we are in the full swing of activities and events for the fall. It is hard to believe that it is already time for Thanksgiving! We extend an invitation to all our parents to attend our Annual Thanksgiving Luncheon on Friday, Nov 18th at noon. You are welcome to bring a dish to share. Please do not send lunch for your children that day. The staff make a delicious lunch with all the trimmings. Please join us to socialize and celebrate the holiday at TPCDC.

This season brings lots of fun activities for children, including visiting a pumpkin patch, collecting leaves, and looking at the fall colors.

Yard Sale

Thanks a lot for donating items for the yard sale!

Costume Parade

It was such fun! The children had a ball.

Changes on the Board

I take this opportunity to thank all the outgoing board members and welcome the newcomers. Big Thanks to Carla Komich (2010-11 Treasurer) and Patty First (Co-Chair) who made such wonderful contributions to the Center over the past years.

Happy Thanksgiving and have a wonderful holiday season!

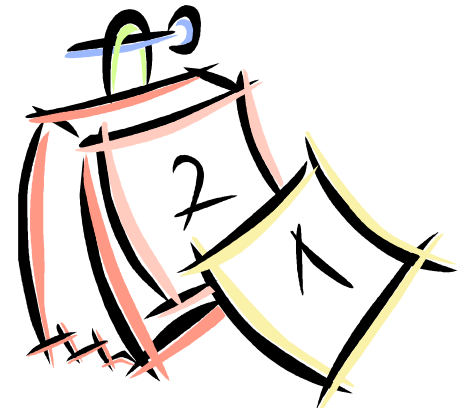
- *Nalini*

HOLIDAY CLOSURES

Montgomery County Public Schools will be **CLOSED** December 26 - January 2

TPCDC will be **CLOSED** December 26 & 27 but will be **OPEN** December 28-30

The Center will be **CLOSED** again January 2 for the New Year Holiday



NOV. 10 & 11
Public Schools Early Release

NOV. 18
Thanksgiving Luncheon - Noon

NOV. 20
Online Book Fair Begins!
(link inside)

NOV. 23
TPCDC Closes at 3
TPCDC CLOSED
11/24 & 11/25

NOV. 23
Book Fair Teacher Preview Day

NOV. 28 - DEC. 1
Book Fair !

Our Staff	Our Parent Board of Directors
<p>Director: Nalini Jeevaraj</p> <p>Office Administrator: Joan Byrd</p> <p>Teddy Bears: Ana Rodriguez, Martha Talento, Reina Vasquez, Dorys Ferman</p> <p>Munchkins: Cecilia Gallagher, Indhira Hill, Yanira Salgado, Dora Moraco</p> <p>Rainbows: Selvi Vijaykumar, Teresa Abanto, Ada Cruz, Christine Bui</p> <p>Explorers: Sherri Smith, Pat Frazier, Arley Reyes, Beatriz Perez, Brenda Roberts</p> <p>Shining Stars (K and 1st): Brenda Roberts, Dorothy Battle, Mikea Hall, Arly Reyes (as needed)</p> <p>School Agers (2nd and Up): Phi Thi Thach, Jonathan Berros, Lindsey Hicks</p>	<p>Co-Chairs: Steve Moody, Terri Pendleton</p> <p>Treasurer: James Kocornik-Mina Secretary: Ann McCarthy</p> <p>Board Members: Cary Burnell, John Cox, Chris Daw, Sam Garman, Matt Hobbs, Adriana Kokornik-Mina, Libby Richman, Brian Slocum, Noam Unger, Caroline Wadhams, Malawi Welles</p> <p>Classroom Coordinators: Teddy Bears: Patty First Munchkins: Noam Unger Rainbows: Mark Schwartz Explorers: Matt Hobbs Shining Stars: Chris Daw School Agers: TBD (Volunteer Needed!)</p> <p>The Board meets on the second Thursday of each month. This month: 11/10 at 7pm in the Shining Stars classroom.</p>

Join the TPCDC Parents Email List!

The TPCDC Parents list is used for Center announcements, information and updates. To join, please send a request to parentslist@tpcdc.org with your your preferred email address, your child's name and their classroom. Thanks!

Get Text Updates from TPCDC!

Now you can receive TEXT messages about weather closings, emergencies, Center announcements, etc.
 Just text the word TPCDC to 41411



Classroom Updates



Teddy Bears

We've had a great time with the Teddy Bears, talking about getting to know each other and helping them acclimate to the classroom.

In the month of October we talked about fall colors and we look forward to continuing to talk about them, but in a more interesting way.

For the month of November, we are ready to focus on food, fruit and vegetables, categorizing them by color, such as green, red, orange, yellow and white. We will introduce colorful fruits and veggies from the Color Me Healthy book.

The children will have the opportunity to taste most of the fruit and veggies during snack as well as classify them by colors.



Munchkins

Happy Fall! Our themes for the month are fruits and vegetables, Fall and

Thanksgiving.



We have lots of fun and exciting activities planned. We will go on a leaf hunt. The children are going to learn the turkey dance and create Thanksgiving cards. A trip to the grocery store is planned. Group time will focus on fruits and veggies and how they are good for our body. The children will participate in making a grocery list. This month promises to be fun filled!



Rainbows

The theme for November is healthy foods and Thanksgiving. The first two weeks we will learn about healthy and non healthy foods.

Rainbows (cont.)



We will learn how healthy foods keep our body healthy.

The second half of November, we will discuss Thanksgiving and the things we are thankful for. We will be doing exciting activities for the month.

For show and share, your child may bring a healthy recipe, an art project, or books related to the themes.

Explorers

Our theme for November is Healthy Foods. We will discuss the food groups, taste different foods, compare size, shape and color of foods, identify foods through smell, do cooking activities and discuss junk foods.

Please check your child's cubby and make sure there is a set of weather appropriate clothing there.

The children show a lot of excitement when it's their show n tell day. Please remember to check the calendar for your child's scheduled day and the theme for each month.

Our rest time is one hour each day. During this time, we listen to audio stories. Children also have the option of drawing while on their mat with paper and writing materials from home.

Children are going to be very excited with all the candy collected on Halloween. Please remember our no candy policy and leave it at home. No candy in lunchboxes, please.

We make lots of pictures during the day. If your office has scrap paper, we could definitely use it. Thanks!



Shining Stars

November is here! The Shining Stars are looking forward to a very special month. We will talk a lot about sharing and helping others. We will make a Thanksgiving basket to donate to a food center. We will collect canned goods, juice boxes, and any other items you may want to bring. We will do cool cooking projects. We will make hand turkeys and cornucopias. We will take neighborhood walks and we plan on visiting Victory Towers to put on a puppet show. The Shining Stars have been working hard on making cool "gimp" (plastic lace) key chains. We need donations of gimp and different color yarn.

Friendly reminder: On field trip days, your child needs to put all items such as lunches, extra bottle of water, etc., into a backpack. Please make sure your child wears the yellow field trip tshirt (no exceptions). Please dress your child according to the weather, as we take metro/bus on many of our trips. Please make sure to arrive on time for field trips.

The children are allowed to bring items from home such as toys, books, cards, etc. The teachers are not responsible for items brought from home.

School Agers

The School Agers have many exciting things planned for this month. Our focus will be on giving thanks in preparation for Thanksgiving. We will have our annual Thanksgiving lunch on November 18th. We will also make a big turkey whose feathers will be made of the many things we are thankful for, in addition to

other activities. Parents, please remember to arrive on time and make sure your child is wearing a yellow TPCDC tshirt for field trips! Have a great November!



TO THE BOOK FAIR AND BEYOND!

Monday, November 28th - Thursday, December 1st

Browse all day!

Buy books 7:30-9:30 am & 4:30-6 pm

Volunteers needed for setup, book sales, event planning & pack up day!

Please email books@tpcdc.org OR sign up online at <http://signupgenius.com/go/tpcdc1>

Reading Is Out of This World!



www.scholastic.com/bookfairs

© 2011 Scholastic Inc. 9505 + 61006

Find More Great Books ONLINE!

<http://www.tpcdc.org/bookfair>

• Find something for everyone, from preschool to adults.



• Orders ship to school for FREE!

Use this URL to shop our Online Book Fair beginning Nov. 20th!



Read Every Day. Lead a Better Life.

© 2011 Scholastic Inc. 9580

Important Reminders

Remember

Please update your emergency contact information. Make sure there is a full set of season appropriate extra clothes in your child's cubby. Please remember to bring a sheet and a blanket for nap time and take them home at the end of each week for cleaning.

Reminder to Part-Timers

A special reminder to parents of children who are enrolled part-time at TPCDC. Please remember that your contract is for specific days of the week and not for a number of days per week. If TPCDC is closed on a day that your child normally attends, you may not bring your child on another day that week to make it up. If you wish to bring your child on a day that she or he is not contracted for, please check with the Director in advance to ensure there is space available in the classroom. We regret any inconvenience this may cause.

Late Pick-Up Policy

Please come to pick-up your child early enough so that you have enough time to gather your child's belongings and exit by 6:00 pm (1 pm for morning attendees). We appreciate your help in doing this so that our staff can leave at a reasonable time in the evening.

A \$15 late fee for each 15 minutes or portion thereof will be charged for children who are left at the center after 1 pm (morning program attendees) or 6 pm (afternoon attendees or full day program attendees).

Fees:

6:00 - 6:15 = \$15

6:16 - 6:30 = \$30

6:31 - 6:45 = \$45

6:46 - 7:00 = \$60

Chronic lateness will be assessed an extra surcharge of \$50 for each occurrence. (Please refer to our family handbook on page 17.)

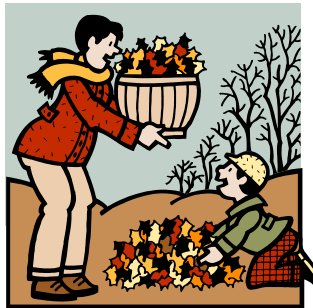
Parental Assistance on the Playground

At dismissal time, there is a lot of activity on the playground with all the adults, conversations, and

playing occurring. There has been difficulty in defining when the teachers turn over responsibility of children when we are on the playground at dismissal time. We ask that when you come to pick up your child and he/she is already on the outdoor playground, that you officially take over responsibility of your child as soon as you enter the playground and your child becomes aware of your presence. We thank you for your assistance in this matter.

Clothing

Children should wear comfortable clothes that they can remove easily. Children should not wear "dress" clothes as they are likely to get messy. Weather appropriate clothing should always be provided: hats, gloves, etc. in the winter months and shorts in the summer. Children must always wear shoes. Sturdy footwear is recommended. For their own safety, children may not wear shoes that expose their toes.



Toys from Home

Because toys from home are often difficult to share, easy to lose, and breakable we ask that children do not bring toys from home to the center except for show and tell. If your child has a special item he or she would like to share, please let your child's teacher know. The center does not allow toys that promote aggressive behavior such as guns, knives, or swords. Following are some appropriate and popular items: photographs, hand made toys and games, books, objects found in nature and art work.

Health Issues

It is important to keep teachers and office staff informed of children's health issues. Please bring emergent health issues to our attention, particularly head lice, strep throat, and pink eye.

Health Insurance Card

NAEYC requires that each child in the center should have his/her insurance card in their file. Please bring a copy of the card and drop it in the office.



Policy Reminders



Sick Policy

Before your child begins attending TPCDC, it is important that you have an alternate plan for child care in the event that your child becomes ill. If you keep your child home due to sickness, please call to notify the Center of his/her absence and particular illness. If you bring your child to the Center but think that he/she may not be feeling well, please tell the teachers so they can be more alert for any signs of a developing illness.

If your child becomes ill during the school day (see criteria below), you will be called to take him/her home. If you cannot be reached, school personnel will contact persons listed on your child's emergency contact form. Until pick-up, your child will be separated from the other children at the Center and observed at the main office.

Exclusion Criteria

Children may not attend TPCDC if they have any of the following signs or symptoms:

- Any illness that prevents the child from participating comfortably in program activities
- Any illness that results in a greater need for care than staff can provide without compromising the health and safety of other children
- Fever (over 100 degrees by mouth, ear, or rectally)
- Difficulty breathing (e.g uncontrolled asthma attack)
- Lethargy, irritability, persistent crying, or other sign of possible severe illness
- Diarrhea (2 or more loose stools in the past 12 hours or any loose stool with blood or mucus)
- Vomiting (2 or more times in the past 24 hours)
- Mouth sores associated with drooling (e.g. herpes stomatitis)
- Contagious rash (chicken pox, impetigo, scabies,



ringworm of the scalp)

- Rash with fever or behavior change
- Infectious conjunctivitis (pink/red eye with white or yellow eye discharge)
- Head lice
- Sore throat and swollen glands to the point of discomfort and difficulty eating
- Persistent cough that interferes with activities

Children who are sick may return to the Center once the fever, diarrhea, and or vomiting has resolved for preferably 24 hours, and they can comfortably participate in program activities. For specific illnesses or conditions, children may return once the criteria outlined below have been met.

Illness Criteria for Return

- Chicken pox: All lesions have dried over or 6 days after onset of rash
- Conjunctivitis, infectious: Note from clinician with treatment, or eye clear without discharge
- Ear infection: No fever for 24 hours
- E coli 0157:H7: Diarrhea resolved and two stool cultures negative
- Hepatitis A: 1 week after onset of illness or jaundice
- Impetigo: 24 hours after antibiotic treatment is started
- Lice: After the first treatment
- Measles: 4 days after onset of rash
- Mouth sores with drooling: Note from clinician
- Mumps: 9 days after onset of parotid gland swelling
- Pertussis (whooping cough): 5 days of completed antibiotic treatment (out of 14 days total)
- Rash w/fever, behavior change: Note from clinician
- Ringworm of scalp: Treatment for Tinea Capitis started
- Scabies: After treatment is completed



Policy Reminders



- Shigella: Diarrhea resolved and two stool cultures negative
- Strep throat: 24 hours after antibiotic is started and no fever for 24 hours
- Tuberculosis: Note from clinician stating no longer contagious

Special Note: Ringworm

Children with ringworm of the scalp or Tinea Capitis may not attend the Center until a clinician prescribed antifungal treatment is started. Children with ringworm on the body may still attend the Center but will not be permitted in swimming pool activities until treatment is started.

(Sick policy recommendations are based on the Red Book 2000, 25th edition, Report of the Committee on Infectious Diseases, American Academy of Pediatrics and the Communicable Disease Summary: Guide for Schools and Child Care Settings, Maryland Department of Health and Mental Hygiene, 1998.)

Immunizations

Your child should be up to date on all immunizations recommended by the Maryland Department of Health. If you do not want your child immunized for medical or religious reason, you must fill out the appropriate exemption form.

Communicable Disease

The Health Department does not permit children to remain in the Center if they have a communicable disease or symptoms of a communicable disease. Parent(s) / guardian(s) should notify the Center's Director within 24 hours after the child has developed a known or suspected communicable disease. If a child is found to have signs or symptoms of a communicable disease, a notice will be posted on the family communication board indicating the disease and the nature of the illness. The names of the children will not be provided. All information about communicable diseases is confidential.

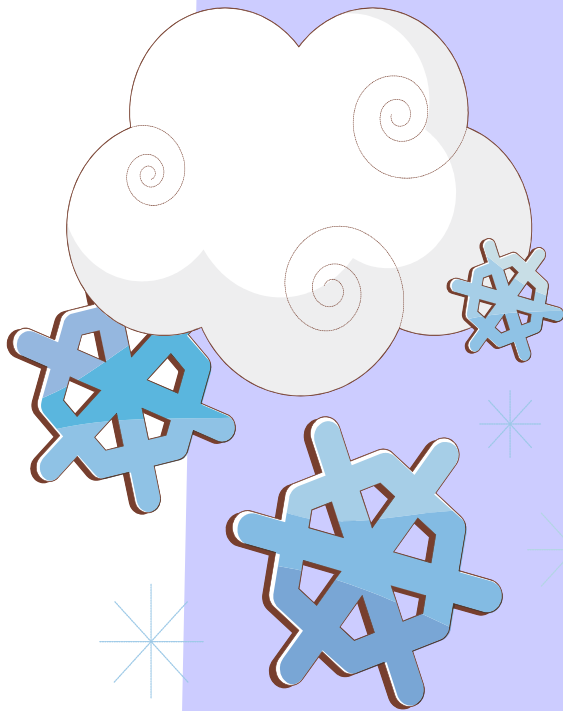


The following communicable diseases must be posted or reported:

- Chicken pox/varicella
- Conjunctivitis, infectious (pink eye)
- Diarrhea: viral, parasitic or bacterial (e.g., E. coli, Salmonella, Shigella, Rotavirus, Norwalk agent, Enterovirus, Giardia)
- Diphtheria*
- Fifth Disease/Erythema infectiosum
- Haemophilus influenzae type B (Hib)*
- Hepatitis A*
- Hepatitis B*
- Hand, Foot, and Mouth Disease
- Herpes simplex virus stomatitis (severe case of oral herpes)
- Impetigo
- Influenza (the flu)
- Lice
- Lyme Disease*
- Measles*
- Meningitis, viral or bacterial (e.g., meningococcus*, enterovirus)
- Mumps*
- Pertussis (whooping cough)*
- Rabies*
- Rubella*
- Ringworm of scalp or body
- Scabies
- Stomach virus
- Strep throat/Scarlet fever
- Tuberculosis*
- Typhoid Fever*

Diseases marked with an asterisk(*) need to be reported by Center staff to Montgomery Health Department.

INCLEMENT WEATHER



During times of inclement weather, TPCDC will post facility closings or late openings on the TPCDC website (under the “Center Updates” tab) and on Channel 7 and Channel 8 Morning News.

Now you can receive text messages about weather closings, emergencies, announcements, etc.!

Just text the word TPCDC to 41411

<http://www.tpcdc.org>

