

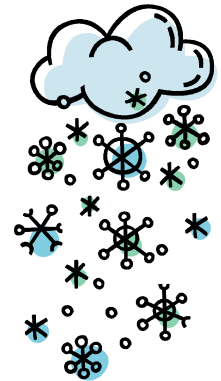


Takoma Park Child Development Center Monthly Newsletter

January 2012

Takoma Park Child Development Center
310 Tulip Avenue
Takoma Park, MD 20912
301-270-6824
tpcdc1111@yahoo.com

INCLEMENT WEATHER



JANUARY 2
Public Schools
CLOSED
TPCDC CLOSED

JANUARY 16
Martin Luther
King, Jr.
Holiday
Public Schools
CLOSED
TPCDC
CLOSED

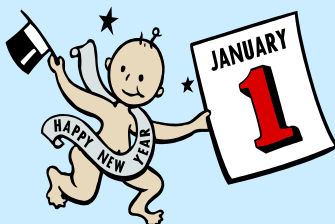


During times of inclement weather, TPCDC will post facility closings or late openings on the TPCDC website (under the "Center Updates" tab) and on Channel 7 and Channel 8 Morning News.



Now you can receive text messages about weather closings, emergencies, announcements, etc.!

Just text the word TPCDC to 41411



Holiday clean up time? Please donate your Xmas cards, wrapping paper, gift bags, ribbons and bows for art projects!

Our Staff	Our Parent Board of Directors
<p>Director: Nalini Jeevaraj</p> <p>Office Administrator: Joan Byrd</p> <p>Teddy Bears: Ana Rodriguez, Martha Talento, Reina Vasquez, Dorys Ferman</p> <p>Munchkins: Cecilia Gallagher, Indhira Hill, Yanira Salgado, Dora Moraco</p> <p>Rainbows: Selvi Vijaykumar, Teresa Abanto, Ada Cruz, Christine Bui</p> <p>Explorers: Sherri Smith, Pat Frazier, Arley Reyes, Beatriz Perez, Brenda Roberts</p> <p>Shining Stars (K and 1st): Brenda Roberts, Dorothy Battle, Mikea Hall, Arly Reyes (as needed)</p> <p>School Agers (2nd and Up): Phi Thi Thach, Jonathan Berros, Lindsey Hicks</p>	<p>Co-Chairs: Steve Moody, Terri Pendleton</p> <p>Treasurer: James Kocornik-Mina Secretary: Brian Slocum</p> <p>Board Members: Cary Burnell, John Cox, Chris Daw, Sam Garman, Matt Hobbs, Adriana Kokornik-Mina, Ann McCarthy, Libby Richman, Noam Unger, Caroline Wadhams, Malawi Welles</p> <p>Classroom Coordinators: Teddy Bears: Patty First Munchkins: Noam Unger Rainbows: Mark Schwartz Explorers: Matt Hobbs Shining Stars: Chris Daw School Agers: TBD</p> <p>The Board meets on the second Thursday of each month. This month: 1/12 at 7pm in the School Agers classroom.</p>

Join the TPCDC Parents Email List!
 The TPCDC Parents list is used for Center announcements, information and updates. To join, please send a request to parentslist@tpcdc.org with your your preferred email address, your child's name and their classroom. Thanks!

Get Text Updates from TPCDC!
 Now you can receive TEXT messages about weather closings, emergencies, Center announcements, etc.
 Just text the word TPCDC to 41411

Classroom Updates

Teddy Bears

We hope you have had a great holiday season!

For the month of January, we look forward to talking about winter animals, winter drinks and winter clothes. We will read as many stories as possible related to the theme, such as Frosty's New Friends, Plenty of Penguins, First Snow, Animal Friends, and many more!

We will also have some cooking projects, like hot chocolate, hot apple cider and rice with milk.



For Art, we will make a collage about winter clothing, featuring things such as a scarf, hat, mittens and other winter items.

Munchkins

Happy New Year 2012!

Winter is here. Our theme this month is Winter Fun. During this month, the Munchkins will talk about what we do in the winter. We will have a lot of activities to make winter fun, such as: making color ice and using it to paint; making colorful snowmen (weather permitting); cooking hot chocolate; and playing winter games.



Throughout the month, Munchkins will keep busy and develop awareness of winter activities.

Please remember to dress children according to the weather!

Rainbows

Happy New Year! The Rainbows have had a great time in the year 2011. We are excited about the upcoming activities. We will be talking about our theme this month, Winter Wonderland.

We will focus on weather changes and ways we can dress to stay warm. We will learn about winter sports and Arctic animals. We will do activities to help the children use number skills as they match numbers 1-10 in the winter theme. We will do cool art projects and we will make hot chocolate.

For January show and share, please bring books, art projects, drawings or pictures related to the Winter Wonderland theme. Upcoming events will be posted on the parent board in our classroom.



Explorers

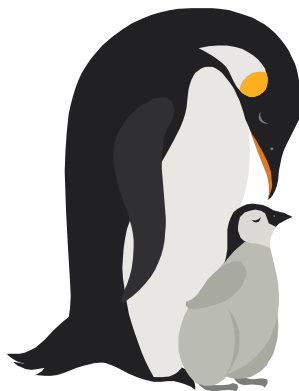
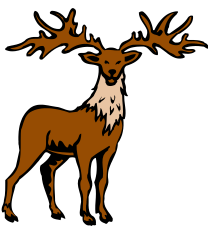


Our theme for January is Winter Animals and Hibernation.

During the month of January, we will discover which animals hibernate during the winter and which animals do not.

We will focus on penguins, reindeer, butterflies and moths, just to mention a few.

We will do a map search to discover what kind of animals live in various areas around the world.



Explorers (cont.)



The Explorers will celebrate a special event on January 24th. It is our 100 Day Celebration. We will play games and share a special snack in honor of our 100 Day Celebration.

Our show and tell theme is 100 items. Each child should make a poster using 100 small items to share on their scheduled day.

Shining Stars & School Ager

Welcome January! For the month of January, the Shining Stars and the School Ager will begin gathering ideas and music for the Pasta Dinner. We will also begin practicing for the talent show.

We will talk about Martin Luther King, Jr. We will reflect on how he worked for peace and how he used friendship to bring people together. We will write our own "I Have a Dream" posters.



As a reminder, on days when the children are out of school and attending camp, the child will always need the following: yellow TPCDC tshirt, comfortable shoes, brown bag lunch (unless otherwise indicated). Please put all items into a backpack. Always pack an extra bottle of water.

All information about field trips will be posted outside the classrooms. If you are not sure what is happening during a camp day, please just call and ask.

Please remember to call the office if your child will not be at aftercare. Happy New Year to everyone! We are looking forward to a great year!



Important Reminders



Remember

Please update your emergency contact information. Make sure there is a full set of season appropriate extra clothes in your child's cubby. Please remember to bring a sheet and a blanket for nap time and take them home at the end of each week for cleaning.

Reminder to Part-Timers

A special reminder to parents of children who are enrolled part-time at TPCDC. Please remember that your contract is for specific days of the week and not for a number of days per week. If TPCDC is closed on a day that your child normally attends, you may not bring your child on another day that week to make it up. If you wish to bring your child on a day that she or he is not contracted for, please check with the Director in advance to ensure there is space available in the classroom. We regret any inconvenience this may cause.

Late Pick-Up Policy

Please come to pick-up your child early enough so that you have enough time to gather your child's belongings and exit by 6:00 pm (1 pm for morning attendees). We appreciate your help in doing this so that our staff can leave at a reasonable time in the evening.

A \$15 late fee for each 15 minutes or portion thereof will be charged for children who are left at the center after 1 pm (morning program attendees) or 6 pm (afternoon attendees or full day program attendees).

Fees:

6:00 - 6:15 = \$15

6:16 - 6:30 = \$30

6:31 - 6:45 = \$45

6:46 - 7:00 = \$60

Chronic lateness will be assessed an extra surcharge of \$50 for each occurrence. (Please refer to our family handbook on page 17.)

Parental Assistance on the Playground

At dismissal time, there is a lot of activity on the playground with all the adults, conversations, and

playing occurring. There has been difficulty in defining when the teachers turn over responsibility of children when we are on the playground at dismissal time. We ask that when you come to pick up your child and he/she is already on the outdoor playground, that you officially take over responsibility of your child as soon as you enter the playground and your child becomes aware of your presence. We thank you for your assistance in this matter.

Clothing

Children should wear comfortable clothes that they can remove easily. Children should not wear "dress" clothes as they are likely to get messy. Weather appropriate clothing should always be provided: hats, gloves, etc. in the winter months and shorts in the summer. Children must always wear shoes. Sturdy footwear is recommended. For their own safety, children may not wear shoes that expose their toes.



Toys from Home

Because toys from home are often difficult to share, easy to lose, and breakable we ask that children do not bring toys from home to the center except for show and tell. If your child has a special item he or she would like to share, please let your child's teacher know. The center does not allow toys that promote aggressive behavior such as guns, knives, or swords. Following are some appropriate and popular items: photographs, hand made toys and games, books, objects found in nature and art work.

Health Issues

It is important to keep teachers and office staff informed of children's health issues. Please bring emergent health issues to our attention, particularly head lice, strep throat, and pink eye.

Health Insurance Card

NAEYC requires that each child in the center should have his/her insurance card in their file. Please bring a copy of the card and drop it in the office.



Policy Reminders



Sick Policy

Before your child begins attending TPCDC, it is important that you have an alternate plan for child care in the event that your child becomes ill. If you keep your child home due to sickness, please call to notify the Center of his/her absence and particular illness. If you bring your child to the Center but think that he/she may not be feeling well, please tell the teachers so they can be more alert for any signs of a developing illness.

If your child becomes ill during the school day (see criteria below), you will be called to take him/her home. If you cannot be reached, school personnel will contact persons listed on your child's emergency contact form. Until pick-up, your child will be separated from the other children at the Center and observed at the main office.

Exclusion Criteria

Children may not attend TPCDC if they have any of the following signs or symptoms:

- Any illness that prevents the child from participating comfortably in program activities
- Any illness that results in a greater need for care than staff can provide without compromising the health and safety of other children
- Fever (over 100 degrees by mouth, ear, or rectally)
- Difficulty breathing (e.g uncontrolled asthma attack)
- Lethargy, irritability, persistent crying, or other sign of possible severe illness
- Diarrhea (2 or more loose stools in the past 12 hours or any loose stool with blood or mucus)
- Vomiting (2 or more times in the past 24 hours)
- Mouth sores associated with drooling (e.g. herpes stomatitis)
- Contagious rash (chicken pox, impetigo, scabies,



ringworm of the scalp)

- Rash with fever or behavior change
- Infectious conjunctivitis (pink/red eye with white or yellow eye discharge)
- Head lice
- Sore throat and swollen glands to the point of discomfort and difficulty eating
- Persistent cough that interferes with activities

Children who are sick may return to the Center once the fever, diarrhea, and or vomiting has resolved for preferably 24 hours, and they can comfortably participate in program activities. For specific illnesses or conditions, children may return once the criteria outlined below have been met.

Illness Criteria for Return

- Chicken pox: All lesions have dried over or 6 days after onset of rash
- Conjunctivitis, infectious: Note from clinician with treatment, or eye clear without discharge
- Ear infection: No fever for 24 hours
- E coli 0157:H7: Diarrhea resolved and two stool cultures negative
- Hepatitis A: 1 week after onset of illness or jaundice
- Impetigo: 24 hours after antibiotic treatment is started
- Lice: After the first treatment
- Measles: 4 days after onset of rash
- Mouth sores with drooling: Note from clinician
- Mumps: 9 days after onset of parotid gland swelling
- Pertussis (whooping cough): 5 days of completed antibiotic treatment (out of 14 days total)
- Rash w/fever, behavior change: Note from clinician
- Ringworm of scalp: Treatment for Tinea Capitis started
- Scabies: After treatment is completed



Policy Reminders



- Strep throat: 24 hours after antibiotic is started and no fever for 24 hours
- Tuberculosis: Note from clinician stating no longer contagious

Special Note: Ringworm

Children with ringworm of the scalp or Tinea Capitis may not attend the Center until a clinician prescribed antifungal treatment is started. Children with ringworm on the body may still attend the Center but will not be permitted in swimming pool activities until treatment is started.

(Sick policy recommendations are based on the Red Book 2000, 25th edition, Report of the Committee on Infectious Diseases, American Academy of Pediatrics and the Communicable Disease Summary: Guide for Schools and Child Care Settings, Maryland Department of Health and Mental Hygiene, 1998.)

Immunizations

Your child should be up to date on all immunizations recommended by the Maryland Department of Health. If you do not want your child immunized for medical or religious reason, you must fill out the appropriate exemption form.



Communicable Disease

The Health Department does not permit children to remain in the Center if they have a communicable disease or symptoms of a communicable disease. Parent(s) / guardian(s) should notify the Center's Director within 24 hours after the child has developed a known or suspected communicable disease. If a child is found to have signs or symptoms of a communicable disease, a notice will be posted on the family communication board indicating the disease and the nature of the illness. The names of the children will not be provided. All information about communicable diseases is confidential.

The following communicable diseases must be posted or reported:

- Chicken pox/varicella
- Conjunctivitis, infectious (pink eye)
- Diarrhea: viral, parasitic or bacterial (e.g., E. coli, Salmonella, Shigella, Rotavirus, Norwalk agent, Enterovirus, Giardia)
- Diphtheria*
- Fifth Disease/Erythema infectiosum
- Haemophilus influenzae type B (Hib)*
- Hepatitis A*
- Hepatitis B*
- Hand, Foot, and Mouth Disease
- Herpes simplex virus stomatitis (severe case of oral herpes)
- Impetigo
- Influenza (the flu)
- Lice
- Lyme Disease*
- Measles*
- Meningitis, viral or bacterial (e.g., meningococcus*, enterovirus)
- Mumps*
- Pertussis (whooping cough)*
- Rabies*
- Rubella*
- Ringworm of scalp or body
- Scabies
- Stomach virus
- Strep throat/Scarlet fever
- Tuberculosis*
- Typhoid Fever*

Diseases marked with an asterisk(*) need to be reported by Center staff to Montgomery Health Department.