

Takoma Park Child Development Center Monthly Newsletter

February 2012

TPCDC Director Search Update

Takoma Park Child Development Center
310 Tulip Avenue
Takoma Park, MD 20912
301-270-6824
tpcdc1111@yahoo.com



February 20
President's Day
Holiday

Public Schools
CLOSED
TPCDC
CLOSED

March 10
Annual TPCDC
Pasta Dinner
and Talent
Show!

Tickets go on
sale soon

Adults: \$12
Children: \$6
Infants free

After learning of Nalini's impending retirement last year, the TPCDC Board created a committee to assist the board as it searches for a new director for the center. This search committee has been busy putting into place a process designed to find the best possible director to carry on Nalini's excellent work, and we are pleased to report several recent developments.

First and foremost, we have hired Foundations for Families, based in Arlington, VA, to assist us in our search. Foundations for Families offers teacher training, management consulting, and hiring assistance throughout the region, and they have extensive experience helping child development centers find highly qualified directors and other staff.

In addition, we are in the process of posting the director job announcement in a number of venues, such as the website of the National Association for the Education of Young Children (NAEYC). We expect to begin reviewing applications soon and anticipate hiring a new director by the end of the academic year.

Throughout this process, the search committee is dedicated to gathering significant input from the community, and we welcome comments or questions from those interested in the search. In the coming weeks, we'll host meetings with TPCDC staff and with parents, inviting everyone to offer their thoughts on the search and on the qualities they believe most important in a new TPCDC director. We will send out details about these meetings as soon as they are available.

If you would like more information about the search, please feel free to email the search committee chair, John Cox, at directorsearch@tpcdc.org or speak with a member of the committee: John Cox, Chris Daw, Steve Moody, Terri Pendleton, Maria Roeper, or Brian Slocum.

Our Staff	Our Parent Board of Directors
<p>Director: Nalini Jeevaraj</p> <p>Office Administrator: Joan Byrd</p> <p>Teddy Bears: Ana Rodriguez, Martha Talento, Reina Vasquez, Dorys Ferman</p> <p>Munchkins: Cecilia Gallagher, Indhira Hill, Yanira Salgado, Dora Moraco</p> <p>Rainbows: Selvi Vijaykumar, Teresa Abanto, Ada Cruz, Christine Bui</p> <p>Explorers: Sherri Smith, Pat Frazier, Arley Reyes, Beatriz Perez, Brenda Roberts</p> <p>Shining Stars (K and 1st): Brenda Roberts, Dorothy Battle, Mikea Hall, Arly Reyes (as needed)</p> <p>School Agers (2nd and Up): Phi Thi Thach, Jonathan Berros, Lindsey Hicks</p>	<p>Co-Chairs: Steve Moody, Terri Pendleton</p> <p>Treasurer: James Kocornik-Mina Secretary: Brian Slocum</p> <p>Board Members: Cary Burnell, John Cox, Chris Daw, Sam Garman, Matt Hobbs, Adriana Kokornik-Mina, Ann McCarthy, Libby Richman, Noam Unger, Caroline Wadhams, Malawi Welles</p> <p>Classroom Coordinators: Teddy Bears: Patty First Munchkins: Noam Unger Rainbows: Mark Schwartz Explorers: Matt Hobbs Shining Stars: Chris Daw School Agers: TBD</p> <p>The Board meets on the second Thursday of each month. This month: 2/9 at 7pm in the School Agers classroom.</p>

Join the TPCDC Parents Email List!
 The TPCDC Parents list is used for Center announcements, information and updates. To join, please send a request to parentslist@tpcdc.org with your your preferred email address, your child's name and their classroom. Thanks!

Get Text Updates from TPCDC!
 Now you can receive TEXT messages about weather closings, emergencies, Center announcements, etc.
 Just text the word TPCDC to 41411

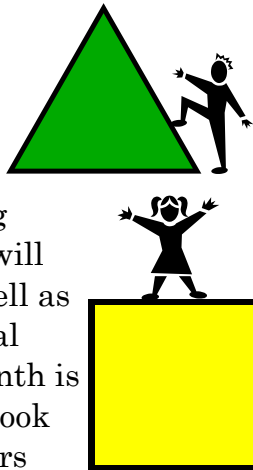


Classroom Updates



Teddy Bears

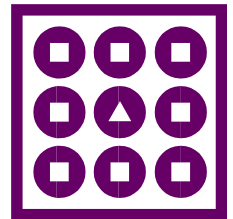
The month of January flew by, and the Teddy Bears will continue the fun, enjoying the cold days of February. We will look forward to staying in the classroom doing activities where the children will get familiar with shapes as well as start building on mathematical concepts. Our topic of the month is Shapes Everywhere. We will look at squares, circles, hearts, stars and triangles. We have a lot of fun



activities planned such as bubble dance, identify the circle, shapes person picture, and more. But most of all we will have our Valentines pot luck on Tuesday 2/14!

Munchkins

Welcome to the month of February! This month our theme is Shapes. The children will become aware of shapes on an introductory walk around the block. They will become familiar with the names of shapes and classify objects by their shape. In addition, the children who are developmentally ready will practice drawing some of the basic shapes. Some of our fun activities this month include: making shapes with our bodies; listening to stories about shapes; making and baking shapes. On the 14th, we will have a friendship pot luck lunch. Please bring a dish (there will be a sign up sheet). We are proud of our Munchkins as they continue to develop self-help skills and become more independent.



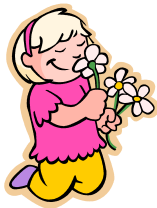
Rainbows



Our theme this month is Community Helpers, such as mail carriers, police officers, fire fighters and doctors. The first week, we will learn the duties of mail carriers, symbols identifying them, and objects found in a post office. We will also plan a visit to the post office. The second week we will have a pot luck lunch and the Rainbows will exchange Valentine cards. We will continue to talk about police officers and fire fighters and how they keep our community safe. We will learn about the vehicles they use and how and why we use emergency numbers, as well as fire safety. The last week we will learn about different types of doctors, how they help people, and the types of tools they use. For show and share, please bring a book, drawing or collage about community helpers. Please check the calendar for your child's show and share day.

Explorers

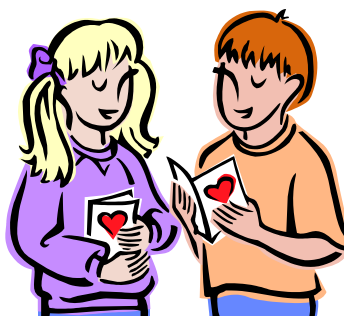
Our theme for February is The Five Senses. We will discuss sight, hearing, smell, taste and touch and how our bodies react to each. Our activities will include using a



feeling box, smelling a variety of fragrances and identifying them, identifying sounds and describing what made them. During creative art we will make binoculars, drums, scented potpourri sachets, as well as many other fun things. Our Valentines friendship dance will be on Tuesday, February 14th from 4-5 pm. A classroom list for exchanging cards and a donation list for party goodies will be posted on the board in the hall. We will also take a field trip to the Museum of Natural History on Friday, 2/17. We will travel by metro. More info will be posted soon.

Shining Stars

For the month of February, the Shining Stars will be making a friendship word wall. We will use different words and phrases to describe what our friends and family mean to us. We will also have a Valentines Day party on Friday, February 17th. We will need donations of yummy goodies such as jello,



fruit salad, cookies or any other snack you might like to bring. It is not mandatory but the children may bring in Valentines. A list of children will be posted outside the classroom. The Shining Stars have

started to practice for the Pasta Dinner. Please let the teachers know if your child will be participating. Thanks again for all of your support!

School Agers

The month of February we will have an art project. Our art project will be making a collage of the people we love and appreciate in our lives. We will also have a Valentine's Day party on Friday, February 17th.



We will exchange Valentine cards. The children that are participating in the Pasta Dinner will continue to practice for the talent show. We are looking forward to a great month!



Important Reminders



Remember

Please update your emergency contact information. Make sure there is a full set of season appropriate extra clothes in your child's cubby. Please remember to bring a sheet and a blanket for nap time and take them home at the end of each week for cleaning.

Reminder to Part-Timers

A special reminder to parents of children who are enrolled part-time at TPCDC. Please remember that your contract is for specific days of the week and not for a number of days per week. If TPCDC is closed on a day that your child normally attends, you may not bring your child on another day that week to make it up. If you wish to bring your child on a day that she or he is not contracted for, please check with the Director in advance to ensure there is space available in the classroom. We regret any inconvenience this may cause.

Late Pick-Up Policy

Please come to pick-up your child early enough so that you have enough time to gather your child's belongings and exit by 6:00 pm (1 pm for morning attendees). We appreciate your help in doing this so that our staff can leave at a reasonable time in the evening.

A \$15 late fee for each 15 minutes or portion thereof will be charged for children who are left at the center after 1 pm (morning program attendees) or 6 pm (afternoon attendees or full day program attendees).

Fees:

6:00 - 6:15 = \$15

6:16 - 6:30 = \$30

6:31 - 6:45 = \$45

6:46 - 7:00 = \$60

Chronic lateness will be assessed an extra surcharge of \$50 for each occurrence. (Please refer to our family handbook on page 17.)

Parental Assistance on the Playground

At dismissal time, there is a lot of activity on the playground with all the adults, conversations, and playing occurring. There has been difficulty in

defining when the teachers turn over responsibility of children when we are on the playground at dismissal time. We ask that when you come to pick up your child and he/she is already on the outdoor playground, that you officially take over responsibility of your child as soon as you enter the playground and your child becomes aware of your presence. We thank you for your assistance in this matter.

Clothing

Children should wear comfortable clothes that they can remove easily. Children should not wear "dress" clothes as they are likely to get messy. Weather appropriate clothing should always be provided: hats, gloves, etc. in the winter months and shorts in the summer. Children must always wear shoes. Sturdy footwear is recommended. For their own safety, children may not wear shoes that expose their toes.



Toys from Home

Because toys from home are often difficult to share, easy to lose, and breakable we ask that children do not bring toys from home to the center except for show and tell. If your child has a special item he or she would like to share, please let your child's teacher know. The center does not allow toys that promote aggressive behavior such as guns, knives, or swords. Following are some appropriate and popular items: photographs, hand made toys and games, books, objects found in nature and art work.

Health Issues

It is important to keep teachers and office staff informed of children's health issues. Please bring emergent health issues to our attention, particularly head lice, strep throat, and pink eye.

Health Insurance Card

NAEYC requires that each child in the center should have his/her insurance card in their file. Please bring a copy of the card and drop it in the office.



Policy Reminders



Sick Policy

Before your child begins attending TPCDC, it is important that you have an alternate plan for child care in the event that your child becomes ill. If you keep your child home due to sickness, please call to notify the Center of his/her absence and particular illness. If you bring your child to the Center but think that he/she may not be feeling well, please tell the teachers so they can be more alert for any signs of a developing illness.

If your child becomes ill during the school day (see criteria below), you will be called to take him/her home. If you cannot be reached, school personnel will contact persons listed on your child's emergency contact form. Until pick-up, your child will be separated from the other children at the Center and observed at the main office.

Exclusion Criteria

Children may not attend TPCDC if they have any of the following signs or symptoms:

- Any illness that prevents the child from participating comfortably in program activities
- Any illness that results in a greater need for care than staff can provide without compromising the health and safety of other children
- Fever (over 100 degrees by mouth, ear, or rectally)
- Difficulty breathing (e.g uncontrolled asthma attack)
- Lethargy, irritability, persistent crying, or other sign of possible severe illness
- Diarrhea (2 or more loose stools in the past 12 hours or any loose stool with blood or mucus)
- Vomiting (2 or more times in the past 24 hours)
- Mouth sores associated with drooling (e.g. herpes stomatitis)
- Contagious rash (chicken pox, impetigo, scabies,



ringworm of the scalp)

- Rash with fever or behavior change
- Infectious conjunctivitis (pink/red eye with white or yellow eye discharge)
- Head lice
- Sore throat and swollen glands to the point of discomfort and difficulty eating
- Persistent cough that interferes with activities

Children who are sick may return to the Center once the fever, diarrhea, and or vomiting has resolved for preferably 24 hours, and they can comfortably participate in program activities. For specific illnesses or conditions, children may return once the criteria outlined below have been met.

Illness Criteria for Return

- Chicken pox: All lesions have dried over or 6 days after onset of rash
- Conjunctivitis, infectious: Note from clinician with treatment, or eye clear without discharge
- Ear infection: No fever for 24 hours
- E coli 0157:H7: Diarrhea resolved and two stool cultures negative
- Hepatitis A: 1 week after onset of illness or jaundice
- Impetigo: 24 hours after antibiotic treatment is started
- Lice: After the first treatment
- Measles: 4 days after onset of rash
- Mouth sores with drooling: Note from clinician
- Mumps: 9 days after onset of parotid gland swelling
- Pertussis (whooping cough): 5 days of completed antibiotic treatment (out of 14 days total)
- Rash w/fever, behavior change: Note from clinician
- Ringworm of scalp: Treatment for Tinea Capitis started
- Scabies: After treatment is completed



Policy Reminders



- Strep throat: 24 hours after antibiotic is started and no fever for 24 hours
- Tuberculosis: Note from clinician stating no longer contagious

Special Note: Ringworm

Children with ringworm of the scalp or Tinea Capitis may not attend the Center until a clinician prescribed antifungal treatment is started. Children with ringworm on the body may still attend the Center but will not be permitted in swimming pool activities until treatment is started.

(Sick policy recommendations are based on the Red Book 2000, 25th edition, Report of the Committee on Infectious Diseases, American Academy of Pediatrics and the Communicable Disease Summary: Guide for Schools and Child Care Settings, Maryland Department of Health and Mental Hygiene, 1998.)

Immunizations

Your child should be up to date on all immunizations recommended by the Maryland Department of Health. If you do not want your child immunized for medical or religious reason, you must fill out the appropriate exemption form.

Communicable Disease

The Health Department does not permit children to remain in the Center if they have a communicable disease or symptoms of a communicable disease. Parent(s) / guardian(s) should notify the Center's Director within 24 hours after the child has developed a known or suspected communicable disease. If a child is found to have signs or symptoms of a communicable disease, a notice will be posted on the family communication board indicating the disease and the nature of the illness. The names of the children will not be provided. All information about communicable diseases is confidential.



The following communicable diseases must be posted or reported:

- Chicken pox/varicella
- Conjunctivitis, infectious (pink eye)
- Diarrhea: viral, parasitic or bacterial (e.g., E. coli, Salmonella, Shigella, Rotavirus, Norwalk agent, Enterovirus, Giardia)
- Diphtheria*
- Fifth Disease/Erythema infectiosum
- Haemophilus influenzae type B (Hib)*
- Hepatitis A*
- Hepatitis B*
- Hand, Foot, and Mouth Disease
 - Herpes simplex virus stomatitis (severe case of oral herpes)
- Impetigo
- Influenza (the flu)
- Lice
- Lyme Disease*
- Measles*
 - Meningitis, viral or bacterial (e.g., meningococcus*, enterovirus)
- Mumps*
- Pertussis (whooping cough)*
- Rabies*
- Rubella*
- Ringworm of scalp or body
- Scabies
- Stomach virus
- Strep throat/Scarlet fever
- Tuberculosis*
- Typhoid Fever*

Diseases marked with an asterisk(*) need to be reported by Center staff to Montgomery Health Department.